



Electrolux
PROFESSIONAL

Modular Cooking Range Line 700XP 6-Burner Gas Boiling Top

ITEM #

MODEL #

NAME #

SIS #

AIA #



371004 (E7GCGL6C00)

6-burner (5,5 kW each) gas
boiling top

Short Form Specification

Item No.

To be installed on open base installations, bridging supports or cantilever systems. High efficiency flower flame burners with flame regulator and protected pilot light. Flame failure device as standard on burners to protect against accidental extinguishing. Exterior panels in stainless steel with Scotch Brite finish. Pan supports in heavy duty cast iron. One piece pressed work top in 1.5 mm thick stainless steel. Right-angled side edges to allow flush-fitting junction between units.

Main Features

- Unit to be mounted on open base cupboards, bridging supports or cantilever systems.
- The six 5.5 kW high efficiency flower flame burners allow the flame to adapt to different size pans.
- Gas appliance supplied for use with natural or LPG gas, conversion jets supplied as standard.
- Large sized pan support in cast iron (stainless steel as option) with long center fins to allow the use of the largest down to the smallest pans.
- Pan supports in cast iron are washable in a dishwasher.
- Burners to feature flame regulator.
- Flame failure device on each burner protects against gas leakage when accidental extinguishing of the flame occurs.
- Protected pilot light.
- IPx4 water protection.
- Suitable for countertop installation.

Construction

- All exterior panels in Stainless Steel with Scotch Brite finishing.
- One piece pressed 1.5 mm work top in Stainless steel.
- Model has right-angled side edges to allow flush fitting joints between units, eliminating gaps and possible dirt traps.

Optional Accessories

- Junction sealing kit PNC 206086 ☐
- Support for bridge type installation, 1200mm PNC 206139 ☐
- Support for bridge type installation, 1400mm PNC 206140 ☐
- Support for bridge type installation, 1600mm PNC 206141 ☐
- Single burner smooth plate for direct cooking - fits frontal burners only PNC 206260 ☐
- Single burner ribbed plate for direct cooking- fits frontal burners only PNC 206261 ☐
- Single burner radiant plate for pan support PNC 206264 ☐
- Water column with swivel arm (water column extension not included) PNC 206289 ☐
- Water column extension for 700 line PNC 206291 ☐
- Stainless steel double grid for 2 burners PNC 206297 ☐
- Chimney upstand, 1200mm PNC 206306 ☐

APPROVAL:



Experience the Excellence
www.electroluxprofessional.com
ELUX_EMAIL



Electrolux
PROFESSIONAL

Modular Cooking Range Line 700XP 6-Burner Gas Boiling Top

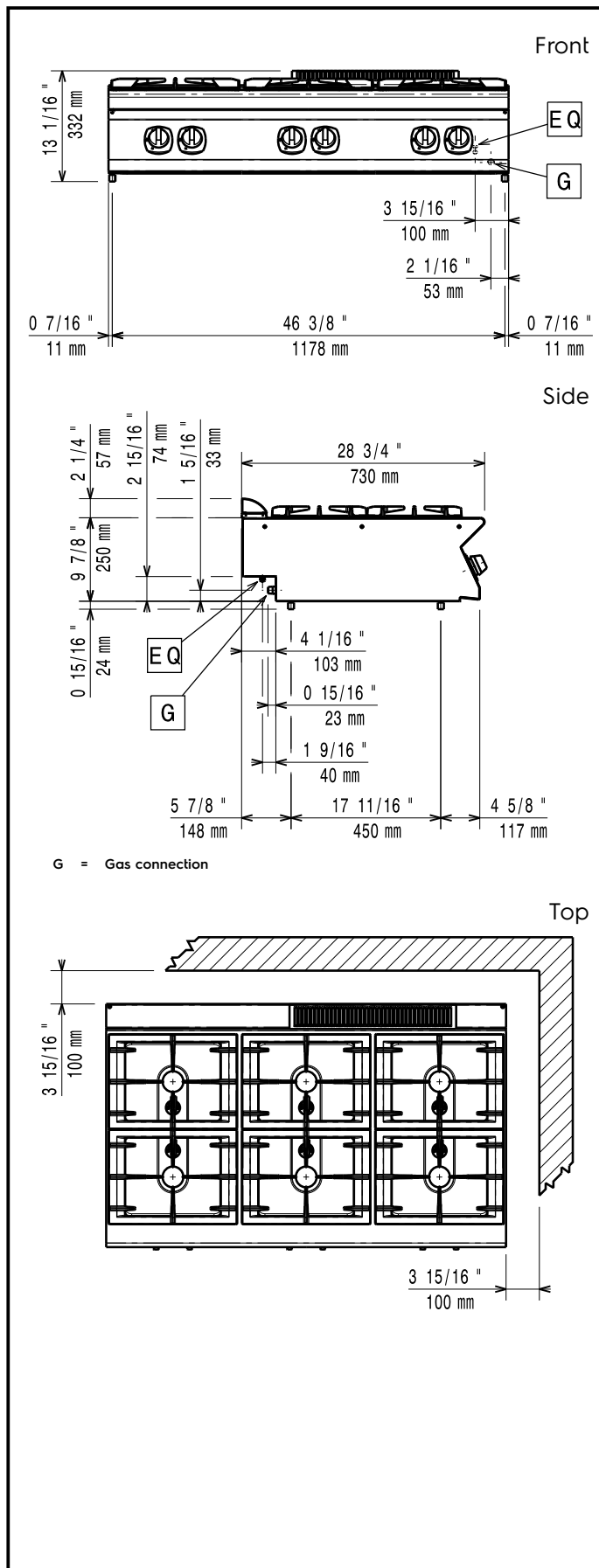
- | | | |
|--|------------|--------------------------|
| • Right and left side handrails | PNC 206307 | <input type="checkbox"/> |
| • Wok pan support for open burners (700/900) | PNC 206363 | <input type="checkbox"/> |
| • - NOT TRANSLATED - | PNC 206387 | <input type="checkbox"/> |
| • - NOT TRANSLATED - | PNC 206460 | <input type="checkbox"/> |
| • Frontal handrail, 1200mm | PNC 216049 | <input type="checkbox"/> |
| • Frontal handrail, 1600mm | PNC 216050 | <input type="checkbox"/> |
| • 2 side covering panels for top appliances | PNC 216277 | <input type="checkbox"/> |
| • Pressure regulator for gas units | PNC 927225 | <input type="checkbox"/> |



Modular Cooking Range Line
700XP 6-Burner Gas Boiling Top

The company reserves the right to make modifications to the products without prior notice. All information correct at time of printing.

2026.02.11



Gas

Gas Power:	33 kW
Standard gas delivery:	Natural Gas G20 (20mbar)
Gas Type Option:	LPG;Town
Gas Inlet:	1/2"

Key Information:

If appliance is set up or next to or against temperature sensitive furniture or similar, a safety gap of approximately 150 mm should be maintained or some form of heat insulation fitted.

Net weight:	55 kg
Shipping weight:	69 kg
Shipping height:	530 mm
Shipping width:	820 mm
Shipping depth:	1260 mm
Shipping volume:	0.55 m ³
Front Burners Power:	5.5 - 5.5 kW
Back Burners Power:	5.5 - 5.5 kW
Middle Burners Power:	5.5 - 0/5.5 - 0 kW
[NOT TRANSLATED]	N7CG
Back Burners Dimension - mm	Ø 60 Ø 60
Front Burners Dimension - mm	Ø 60 Ø 60
Middle Burners Dimension - mm	Ø 60 Ø 60